

Colors

#DE5C49	#E37B40	#FOCA4D	#324D5C	#46B29D
#85372C	#884A26	#90792E	#1E2E37	#2A6B5E

Icons

CTAs

BUTTON	SECONDARY
HOVER	HOVER
TERTIARY CTA LINK >>	INACTIVE

Type

H1 Primary Title

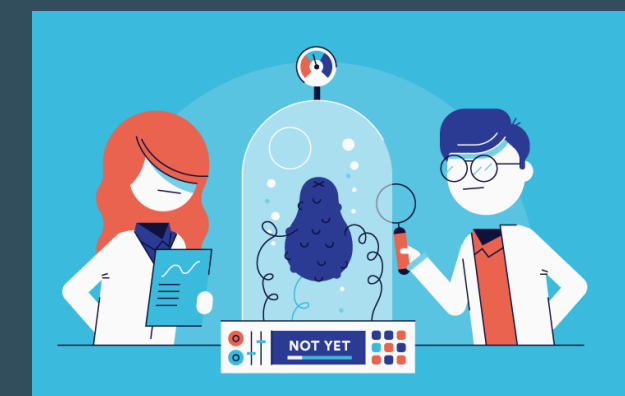
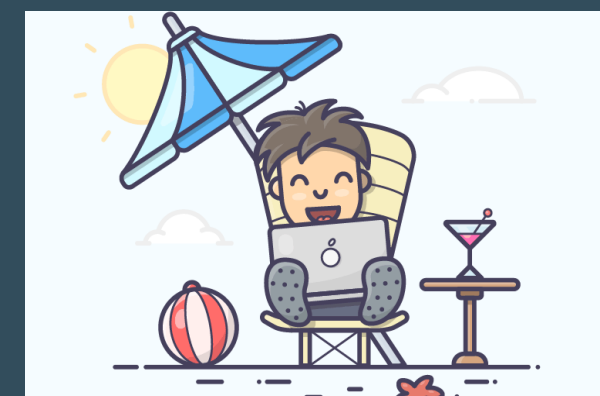
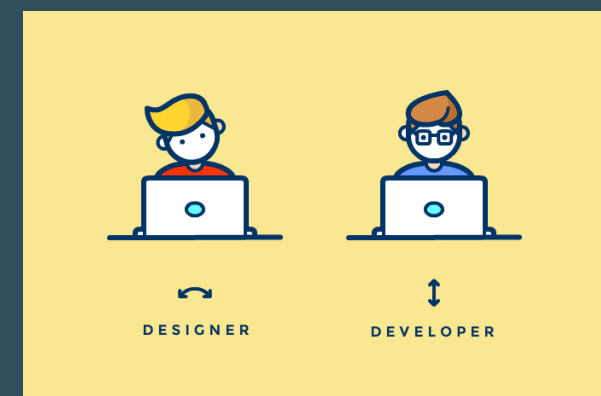
H2 SECONDARY TITLE

H3 Tertiary Title

This is what a regular paragraph looks like. Lorem ipsum dolor sit amet, consectetur adipiscing elit. Sed laoreet neque a diam consectetur, vitae tincidunt massa suscipit. Proin id bibendum est, [in cursus dui](#). Aliquam nec ante in sem finibus sagittis hendrerit in urna. Integer suscipit turpis at pretium ultricies. Nulla mauris lacus, tincidunt nec cursus quis, facilisis vel urna. Fusce sagittis vulputate enim. Sed vestibulum elit nunc, eu euismod nibh molestie id. Sed vitae justo erat. Pellentesque sed eleifend risus. Phasellus felis justo, dignissim id maximus a, sollicitudin in metus. Ut ultrices enim ut [iaculis fringilla](#). Proin laoreet ligula eget dui dictum, eget tincidunt nisl tristique.

```
Jasons-iMac-2:~ jason$ This is what a code snippet looks like.
embed-server --admin-only=true
/system-property=ee8.preview.mode:add(value=true)
stop-embedded-server
```

Images

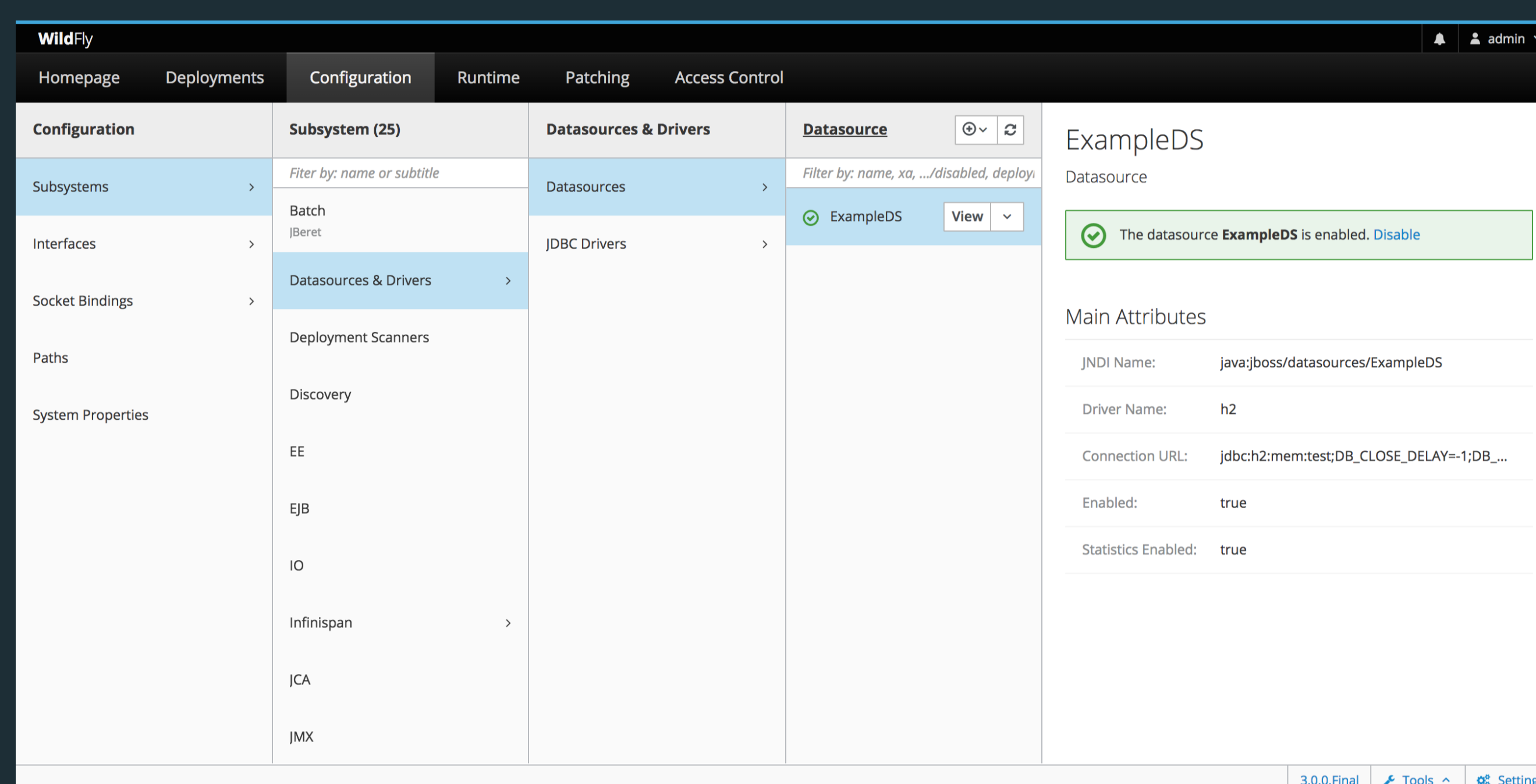


WildFly 13 is now available

[DOWNLOAD THE ZIP](#)
[DOWNLOAD THE TGZ](#)
[OTHER VERSIONS](#)

[GITHUB](#)

[DOCUMENTATION](#)

[FORUMS](#)


WildFly is a powerful, modular, & lightweight application server that helps you build amazing applications.

POWERFUL

Configuration in WildFly is centralized, simple and user-focused. The configuration file is organized by subsystems that you can easily comprehend and no internal server wiring is exposed. All management capabilities are exposed in a unified manner across many forms of access. These include a CLI, a web based administration console, a native Java API, an HTTP/JSON based REST API, and a JMX gateway. These options allow for custom automation using the tools and languages that best fit your needs.

MODULAR

WildFly does classloading right. It uses JBoss Modules to provide true application isolation, hiding server implementation classes from the application and only linking with JARs your application needs. Visibility rules have sensible defaults, yet can be customized. The dependency resolution algorithm means that classloading performance is not affected by the number of versions of libraries you have installed.

LIGHTWEIGHT

WildFly takes an aggressive approach to memory management. The base runtime services were developed to minimize heap allocation by using common cached indexed metadata over duplicate full parses, which reduces heap and object churn. The administration console is 100% stateless and purely client driven. It starts instantly and requires zero memory on the server. These optimizations combined enable WildFly to run with stock JVM settings and also on small devices while leaving more headroom for application data and supports higher scalability.



WildFly is open. All dependencies of this project are available under the [LGPL 2.1](#) or compatible license.

This website was built with [Jekyll](#) is hosted on [Github Pages](#) and is completely open source. If you want to make it better, [fork it](#) and show us what you've got.

Navigation

[Downloads](#)
[Get started](#)
[Docs](#)
[Github](#)
[Blog](#)

Contribute

[Submit a bug](#)
[Join the forum](#)
[Fork WildFly](#)
[Follow us](#)

Get Help

[Join the forum](#)
[Join HipChat](#)
[IRC Channel](#)

Find more Red Hat Middleware Community Projects

APIMan	Gateln	JBoss Remoting	RESTEasy	Teiid
Arquillian	Hawkular	jBPM	Riftsaw	WildFly Swarm
Byteman	Hawtio	JSFUnit	Savara	Wise
CapeDwarf	Hibernate	Keycloak	Seam	XNIO
Chronicle	Infinispan	Mod Cluster	Shrinkwrap	
Darcv	JBoss DevStudio	ModeShape	Snowdrop	
Debezium	JBoss Forge	OptaPlanner	Switchyard	
Drools	JBoss Logging	Picketbox	Tattletale	

WildFly 13 is now available

[DOWNLOAD THE ZIP](#)
[DOWNLOAD THE TGZ](#)

13.0.0

	FINAL	30 May 2018	Beta 1	17 May 2018
Java EE7 Full & Web Distribution	LGPL	ZIP TGZ	Java EE7 Full & Web Distribution	LGPL ZIP TGZ
Servlet-Only distribution	LGPL	ZIP TGZ	Servlet-Only distribution	LGPL ZIP TGZ
Application Server Source Code	LGPL	ZIP TGZ	Application Server Source Code	LGPL ZIP TGZ
Quick Start Source Code	AL	CLONE	Quick Start Source Code	AL CLONE
Release Notes		NOTES	Release Notes	NOTES

12.0.0

	FINAL	28 February 2018	CR1	26 February 2018
Java EE7 Full & Web Distribution	LGPL	ZIP TGZ	Java EE7 Full & Web Distribution	LGPL ZIP TGZ
Servlet-Only distribution	LGPL	ZIP TGZ	Servlet-Only distribution	LGPL ZIP TGZ
Application Server Source Code	LGPL	ZIP TGZ	Application Server Source Code	LGPL ZIP TGZ
Quick Start Source Code	AL	CLONE	Quick Start Source Code	AL CLONE
Release Notes		NOTES	Release Notes	NOTES

11.0.0

	FINAL	23 October 2017	CR1	25 August 2017
Java EE7 Full & Web Distribution	LGPL	ZIP TGZ	Java EE7 Full & Web Distribution	LGPL ZIP TGZ
Servlet-Only distribution	LGPL	ZIP TGZ	Servlet-Only distribution	LGPL ZIP TGZ
Application Server Source Code	LGPL	ZIP TGZ	Application Server Source Code	LGPL ZIP TGZ
Quick Start Source Code	AL	CLONE	Quick Start Source Code	AL CLONE
Release Notes		NOTES	Release Notes	NOTES

	Beta 1	03 August 2017	Alpha 1	27 March 2017
Java EE7 Full & Web Distribution	LGPL	ZIP TGZ	Java EE7 Full & Web Distribution	LGPL ZIP TGZ
Servlet-Only distribution	LGPL	ZIP TGZ	Servlet-Only distribution	LGPL ZIP TGZ
Application Server Source Code	LGPL	ZIP TGZ	Application Server Source Code	LGPL ZIP TGZ
Quick Start Source Code	AL	CLONE	Quick Start Source Code	AL CLONE
Release Notes		NOTES	Release Notes	NOTES

10.1.0

	FINAL	19 August 2016	CR1	28 July 2018
Java EE7 Full & Web Distribution	LGPL	ZIP TGZ	Java EE7 Full & Web Distribution	LGPL ZIP TGZ
Servlet-Only distribution	LGPL	ZIP TGZ	Servlet-Only distribution	LGPL ZIP TGZ
Application Server Source Code	LGPL	ZIP TGZ	Application Server Source Code	LGPL ZIP TGZ
Quick Start Source Code	AL	CLONE	Quick Start Source Code	AL CLONE
Release Notes		NOTES	Release Notes	NOTES

10.0.0

	FINAL	29 January 2016	CR5	23 December 2015
Java EE7 Full & Web Distribution	LGPL	ZIP TGZ	Java EE7 Full & Web Distribution	LGPL ZIP TGZ
Servlet-Only distribution	LGPL	ZIP TGZ	Servlet-Only distribution	LGPL ZIP TGZ
Application Server Source Code	LGPL	ZIP TGZ	Application Server Source Code	LGPL ZIP TGZ
Quick Start Source Code	AL	CLONE	Quick Start Source Code	AL CLONE
Release Notes		NOTES	Release Notes	NOTES

	CR4	23 October 2015	CR3	19 October 2015
Java EE7 Full & Web Distribution	LGPL	ZIP TGZ	Java EE7 Full & Web Distribution	LGPL ZIP TGZ
Servlet-Only distribution	LGPL	ZIP TGZ	Servlet-Only distribution	LGPL ZIP TGZ
Application Server Source Code	LGPL	ZIP TGZ	Application Server Source Code	LGPL ZIP TGZ
Quick Start Source Code	AL	CLONE	Quick Start Source Code	AL CLONE
Release Notes		NOTES	Release Notes	NOTES

	CR2	24 September 2015	CR1	17 September 2015
Java EE7 Full & Web Distribution	LGPL	ZIP TGZ	Java EE7 Full & Web Distribution	LGPL ZIP TGZ
Servlet-Only distribution	LGPL	ZIP TGZ	Servlet-Only distribution	LGPL ZIP TGZ
Application Server Source Code	LGPL	ZIP TGZ	Application Server Source Code	LGPL ZIP TGZ
Quick Start Source Code	AL	CLONE	Quick Start Source Code	AL CLONE
Release Notes		NOTES	Release Notes	NOTES

	Beta 2	23 August 2015	Beta 1	09 August 2015
Java EE7 Full & Web Distribution	LGPL	ZIP TGZ	Java EE7 Full & Web Distribution	LGPL ZIP TGZ
Servlet-Only distribution	LGPL	ZIP TGZ	Servlet-Only distribution	LGPL ZIP TGZ
Application Server Source Code	LGPL	ZIP TGZ	Application Server Source Code	LGPL ZIP TGZ
Quick Start Source Code	AL	CLONE	Quick Start Source Code	AL CLONE
Release Notes		NOTES	Release Notes	NOTES

9.0.2

	FINAL	26 October 2015
Java EE7 Full & Web Distribution	LGPL	ZIP TGZ
Servlet-Only distribution	LGPL	ZIP TGZ
Application Server Source Code	LGPL	ZIP TGZ
Quick Start Source Code	AL	CLONE
Release Notes		NOTES

9.0.1

	FINAL	23 July 2015
Java EE7 Full & Web Distribution	LGPL	ZIP TGZ
Servlet-Only distribution	LGPL	ZIP TGZ
Application Server Source Code	LGPL	ZIP TGZ
Quick Start Source Code	AL	CLONE
Release Notes		NOTES

9.0.0

	FINAL	02 July 2015	CR2	10 June 2015
Java EE7 Full & Web Distribution	LGPL	ZIP TGZ	Java EE7 Full & Web Distribution	LGPL ZIP TGZ
Servlet-Only distribution	LGPL	ZIP TGZ	Servlet-Only distribution	LGPL ZIP TGZ
Application Server Source Code	LGPL	ZIP TGZ	Application Server Source Code	LGPL ZIP TGZ
Quick Start Source Code	AL	CLONE	Quick Start Source Code	AL CLONE
Release Notes		NOTES	Release Notes	NOTES

	CR1	01 May 2015	Beta 2	27 March 2015
Java EE7 Full & Web Distribution	LGPL	ZIP TGZ	Java EE7 Full & Web Distribution	LGPL ZIP TGZ
Servlet-Only distribution	LGPL	ZIP TGZ	Servlet-Only distribution	LGPL ZIP TGZ
Application Server Source Code	LGPL	ZIP TGZ	Application Server Source Code	LGPL ZIP TGZ
Quick Start Source Code	AL	CLONE	Quick Start Source Code	AL CLONE
Release Notes		NOTES	Release Notes	NOTES

	Beta 1	26 March 2015	Alpha 1	15 September 2014
Java EE7 Full & Web Distribution	LGPL	ZIP TGZ	Java EE7 Full & Web Distribution	LGPL ZIP TGZ
Servlet-Only distribution	LGPL	ZIP TGZ	Servlet-Only distribution	LGPL ZIP TGZ
Application Server Source Code	LGPL	ZIP TGZ	Application Server Source Code	LGPL ZIP TGZ
Quick Start Source Code	AL	CLONE	Quick Start Source Code	AL CLONE
Release Notes		NOTES	Release Notes	NOTES

8.2.1

	FINAL	23 July 2015
Java EE7 Full & Web Distribution	LGPL	ZIP TGZ
Servlet-Only distribution	LGPL	ZIP TGZ
Application Server Source Code	LGPL	ZIP TGZ
Quick Start Source Code	AL	CLONE
Release Notes		NOTES

8.2.0

	FINAL	20 November 2014
Java EE7 Full & Web Distribution	LGPL	ZIP TGZ
Servlet-Only distribution	LGPL	ZIP TGZ
Application Server Source Code	LGPL	ZIP TGZ
Quick Start Source Code	AL	CLONE
Release Notes		NOTES

8.1.0

	FINAL	30 May 2014	CR2	12 May 2014
Java EE7 Full & Web Distribution	LGPL	ZIP TGZ	Java EE7 Full & Web Distribution	LGPL ZIP TGZ
Servlet-Only distribution	LGPL	ZIP TGZ	Servlet-Only distribution	LGPL ZIP TGZ
Application Server Source Code	LGPL	ZIP TGZ	Application Server Source Code	LGPL ZIP TGZ
Quick Start Source Code	AL	CLONE	Quick Start Source Code	AL CLONE
Release Notes		NOTES	Release Notes	NOTES

	CR1	11 February 2014
Java EE7 Full & Web Distribution	LGPL	ZIP TGZ
Servlet-Only distribution	LGPL	ZIP TGZ
Application Server Source Code	LGPL	ZIP TGZ
Quick Start Source Code	AL	CLONE
Release Notes		NOTES

8.0.0

	FINAL	11 February 2014	CR1	21 December 2013
Java EE7 Full & Web Distribution	LGPL	ZIP TGZ	Java EE7 Full & Web Distribution	LGPL ZIP TGZ
Servlet-Only distribution	LGPL	ZIP TGZ	Servlet-Only distribution	LGPL ZIP TGZ
Application Server Source Code	LGPL	ZIP TGZ	Application Server Source Code	LGPL ZIP TGZ
Quick Start Source Code	AL	CLONE	Quick Start Source Code	AL CLONE
Release Notes		NOTES	Release Notes	NOTES

	Beta 1	04 October 2013	Alpha 4	12 August 2013
Java EE7 Full & Web Distribution	LGPL	ZIP TGZ	Java EE7 Full & Web Distribution	LGPL ZIP TGZ
Servlet-Only distribution	LGPL	ZIP TGZ	Servlet-Only distribution	LGPL ZIP TGZ
Application Server Source Code	LGPL	ZIP TGZ	Application Server Source Code	LGPL ZIP TGZ
Quick Start Source Code	AL	CLONE	Quick Start Source Code	AL CLONE
Release Notes		NOTES	Release Notes	NOTES

	Alpha 3	17 July 2013	Alpha 2	21 June 2013
Java EE7 Full & Web Distribution	LGPL	ZIP TGZ	Java EE7 Full & Web Distribution	LGPL ZIP TGZ
Servlet-Only distribution	LGPL	ZIP TGZ	Servlet-Only distribution	LGPL ZIP TGZ
Application Server Source Code	LGPL	ZIP TGZ	Application Server Source Code	LGPL ZIP TGZ
Quick Start Source Code	AL	CLONE	Quick Start Source Code	AL CLONE
Release Notes		NOTES	Release Notes	NOTES

	Alpha 1	17 May 2013
Java EE7 Full & Web Distribution	LGPL	ZIP TGZ
Servlet-Only distribution	LGPL	ZIP TGZ
Application Server Source Code	LGPL	ZIP TGZ
Quick Start Source Code	AL	CLONE
Release Notes		NOTES

Table of Contents

[Administrator Guides](#)

[Developer Guides](#)

[Security Guide](#)

[Client Guide](#)

[Quickstarts](#)

[More Resources](#)

Welcome to the WildFly Documentation. The documentation for WildFly is split into two categories:

[Administrator Guides](#) for those wanting to understand how to install and configure the server

[Developer Guides](#) for those wanting to understand how to develop applications for the server

There is also the [WildFly Model Reference](#) that provides information about all subsystem configuration options generated directly from the management model.

Administrator Guides

The [Getting Started Guide](#) shows you how to install and start the server, how to configure logging, how to deploy an application, how to deploy a datasource, and how to get started using the command line interface and web management interface

The [Admin Guide](#) provides detailed information on using the CLI and Web Management interface, how to use the domain configuration, and shows you how to configure key subsystems

The [High Availability Guide](#) shows you how to create a cluster, how configure the web container and EJB container for clustering, and shows you how to configure load balancing and failover

Developer Guides

The [Getting Started Developing Applications Guide](#) shows you how to build Java EE applications and deploy them to WildFly. The guide starts by showing you the simplest helloworld application using just Servlet and CDI, and then adds in JSF, persistence and transactions, EJB, Bean Validation, RESTful web services and more. Finally, you'll get the opportunity to create your own skeleton project. Each tutorial is accompanied by a quickstart, which contains the source code, deployment descriptors and a Maven based build.

The [Developer Guide](#) (in progress) takes you through every deployment descriptor and every annotation offered by WildFly.

The [JavaEE Tutorial](#) (in progress) builds on what you learnt in the Getting Started Developing Applications Guide, and shows you how to build a complex application using Java EE and portable extensions.

The [Extending WildFly guide](#) walks you through creating a new WildFly subsystem extension, in order to add more functionality to WildFly, and shows how to test it before plugging it into WildFly.

The WildFly Testsuite guide walks you trough testing WildFly

Security Guide

The [WildFly Elytron Security guide](#) walks you trough new security layer of of WildFly

Client Guide

The [WildFly Client Configuration](#) guide walks you trough new wildfly client and how to use it.

Quickstarts

WildFly comes with a number of quickstarts, examples which introduce to a particular technology or feature of the application server. The [Contributing a Quickstart](#) section of the documentation details the available quickstarts

More Resources

[Glossary](#) | [WildFly project page](#) | [WildFly issue tracker](#) | [WildFly user forum](#) | [WildFly wiki](#) | [WildFly source](#)



WildFly is open. All dependencies of this project are available under the [LGPL 2.1](#) or compatible license.

This website was built with [Jekyll](#) is hosted on [Github Pages](#) and is completely open source. If you want to help make it better, [fork it](#) and show us what you got.

Navigation

[Downloads](#)

[Get started](#)

[Docs](#)

[Github](#)

[Blog](#)

Contribute

[Submit a bug](#)

[Join the forum](#)

[Fork WildFly](#)

[Follow us](#)

Get Help

[Join the forum](#)

[IRC Channel](#)

Find more Red Hat Middleware Community Projects

[APIMan](#)

[Arquillian](#)

[Byteman](#)

[CapeDwarf](#)

[Chronicle](#)

[Darcy](#)

[Debezium](#)

[Drools](#)

[Gateln](#)

[Hawkular](#)

[Hawtio](#)

[Hibernate](#)

[Infinispan](#)

[JBoss DevStudio](#)

[JBoss Forge](#)

[JBoss Logging](#)

[JBoss Remoting](#)

[jBPM](#)

[JSFUnit](#)

[Keycloak](#)

[Mod Cluster](#)

[ModeShape](#)

[OptaPlanner](#)

[Picketbox](#)

[RESTEasy](#)

[Riftsaw](#)

[Savara](#)

[Seam](#)

[Shrinkwrap](#)

[Snowdrop](#)

[Switchyard](#)

[Tattletale](#)

[Teiid](#)

[WildFly Swarm](#)

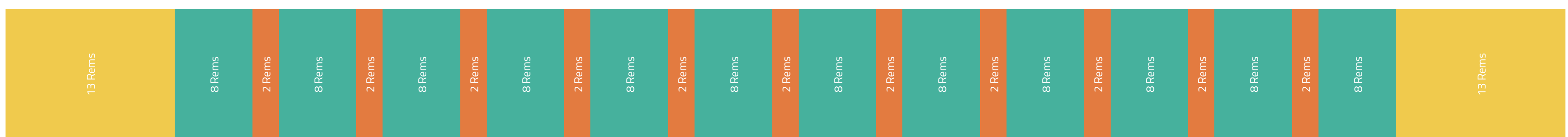
[Wise](#)

[XNIO](#)

WILDFLY.ORG BRAND GUIDELINES

The Grid

■ = 1rem = 16pt



Nullam aliquet est ipsum, quis consectetur libero faucibus at. Donec dui dolor, feugiat ut finibus eget, faucibus vel nunc. Nulla sit amet vulputate justo. Ut bibendum felis turpis, fringilla varius ex vehicula varius. Pellentesque habitant morbi tristique senectus et netus et malesuada fames ac turpis egestas. Suspendisse nec tincidunt neque, sed rhoncus urna. Curabitur lobortis diam sed urna commodo, et condimentum ligula vehicula. Praesent tristique lacus nec purus eleifend lacinia.

Nullam aliquet est ipsum, quis consectetur libero faucibus at. Donec dui dolor, feugiat ut finibus eget, faucibus vel nunc. Nulla sit amet vulputate justo. Ut bibendum felis turpis, fringilla varius ex vehicula varius. Pellentesque habitant morbi tristique senectus et netus et malesuada fames ac turpis egestas. Suspendisse nec tincidunt neque, sed rhoncus urna. Curabitur lobortis diam sed urna commodo, et condimentum ligula vehicula. Praesent tristique lacus nec purus eleifend lacinia.

Typography

<h1> Titillium Web ExtraLight - 96/96

<h2> Titillium Web ExtraLight - 64/64

<h3> Titillium Web Bold - 64/96

<h4> Titillium Web Regular - 24/36

<p> Titillium Web Regular - 16/24 or <p> Titillium Web Regular - 16/24 or <p> Titillium Web Regular - 16/24

<a> Titillium Web Regular - 16/24 or <a> Titillium Web Regular - 16/24

<p> PT Mono Regular 14pt/21 (code snippet) or <p> PT Mono Regular 14pt/21 (code snippet)

Color Palette

